

CAPITOLO II

LA MANO DESTRA

1. Esercizio



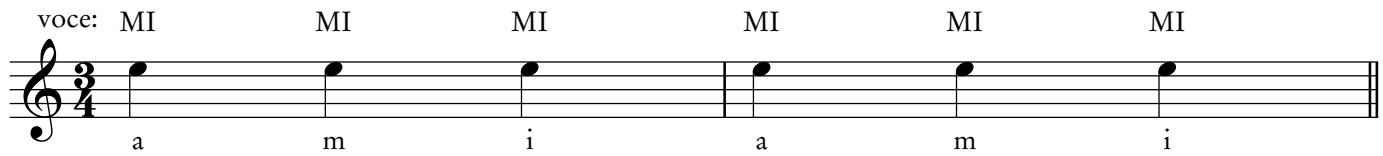
voce: MI - I MI - I MI - I

anulare medio indice

Detailed description: A musical staff in 2/4 time with a treble clef. It contains three measures, each with a single half note on the G line (G4). Above the staff, the notes are labeled 'MI - I', 'MI - I', and 'MI - I' respectively. Below the staff, the fingers are labeled 'anulare', 'medio', and 'indice'.

Dalla prima alla quinta corda e viceversa

2. Esercizio



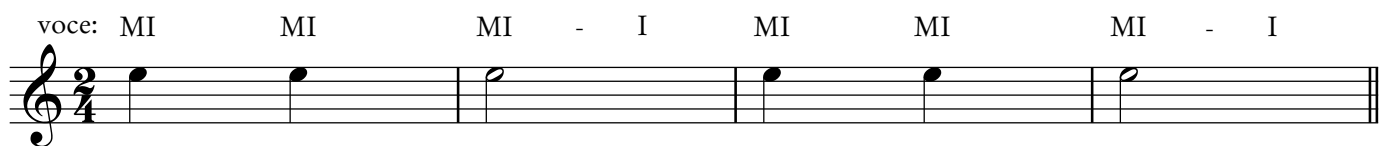
voce: MI MI MI MI MI MI

a m i a m i

Detailed description: A musical staff in 3/4 time with a treble clef. It contains six measures, each with a single quarter note on the G line (G4). Above the staff, the notes are labeled 'MI', 'MI', 'MI', 'MI', 'MI', and 'MI' respectively. Below the staff, the notes are labeled 'a', 'm', 'i', 'a', 'm', and 'i'.

Dalla prima alla quinta corda e viceversa

3. Esercizio



voce: MI MI MI - I MI MI MI - I

Detailed description: A musical staff in 2/4 time with a treble clef. It contains six measures. The first two measures have quarter notes on the G line (G4). The third measure has a half note on the G line. The fourth and fifth measures have quarter notes on the G line. The sixth measure has a half note on the G line. Above the staff, the notes are labeled 'MI', 'MI', 'MI - I', 'MI', 'MI', and 'MI - I' respectively.

Dalla prima alla quinta corda e viceversa

CAPITOLO III

LA MANO SINISTRA - LE NOTE

18. La prima corda

MI FA SOL

MI FA SOL

a m i a m i a m i a m i a m i a m i

0 1 3 1 0 0 1 0

1 0 1 1 3 1 3 1 3 3 1 0 0

19. Duetto con il maestro

Prima intonare le melodie con la voce, poi contemporaneamente suonarle

AC1

MC2

a m i a m i

0 1 3 3 1 1 0

1. 2.

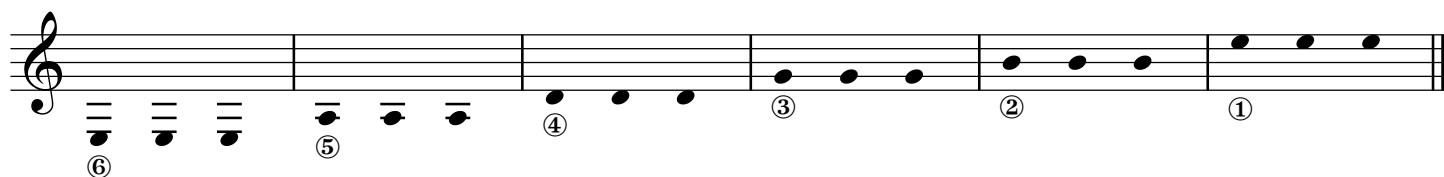
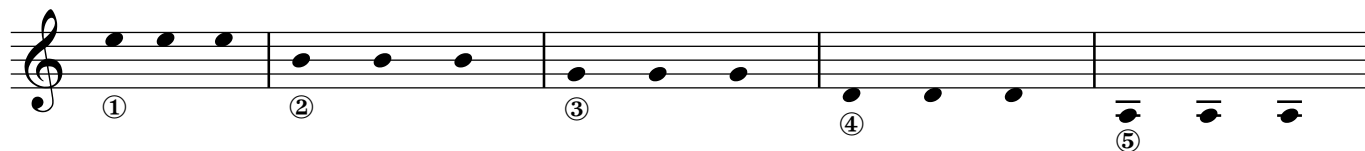
i i

CAPITOLO V

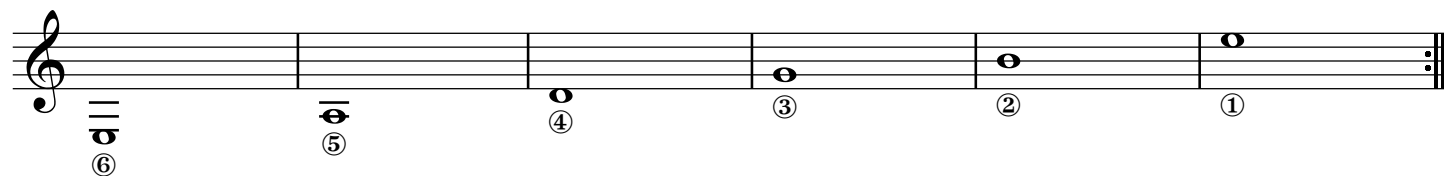
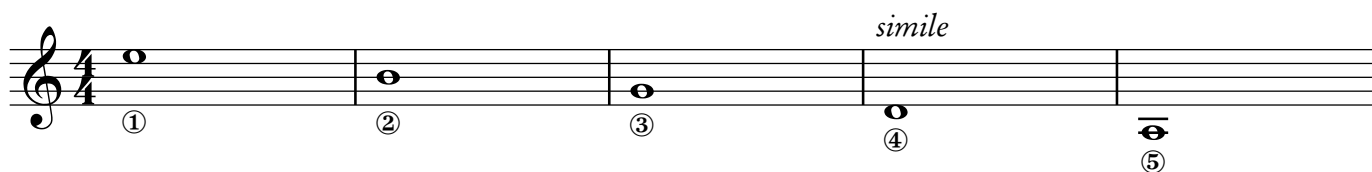
IL POLLICE

58. Il pollice = p

(solo pollice)



59. Esercizio (solo pollice)



60. Esercizio (solo pollice)

(salto di una corda)

