

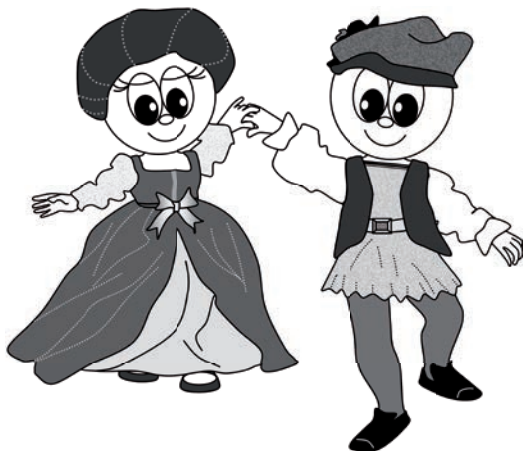
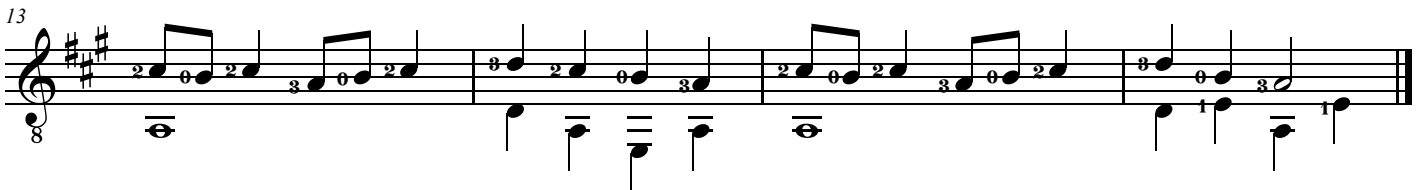
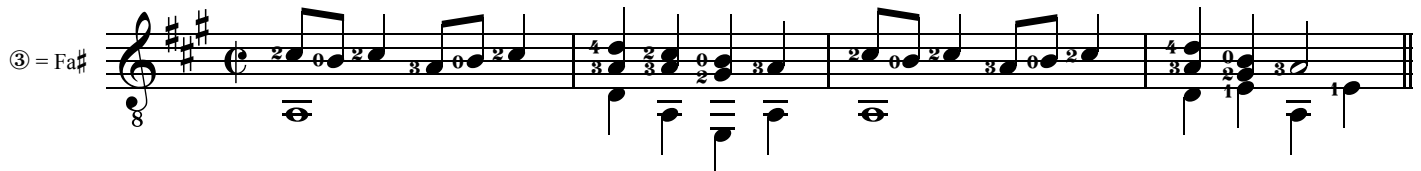
Canarie

da *Delitiae Musicae* (1612)

(liuto)

Joachim van den Hove

(Paesi Bassi, 1567?-1620)



La *Canaria* è una vivace danza di corteggiamento, forse originaria delle isole Canarie, diffusa tra il '400 e il '600.

Volte

da *Pratum Musicum* (1584)
(liuto)

Emmanuel Adriaenssen
(Belgio, ca. 1554-1604)

③ = Fa#
⑥ = Re

0 1 3 1 3 0 3 1 0 1 3 1 0 2 0

3

3 1 0 2 0 2 0 3 2 4 3 4 3

5

0 2 0 1 3 2 3 1 3 0 3 1 0 1 3 1 0 2 0

7

3 1 0 2 0 2 0 3 2 4 3 4 3

9

0 1 3 3 0 3 0 2 4 3

Branle gay

da *Thesaurus Harmonicus* (1603)
(liuto)

Jean-Baptiste Besard

(Francia, ca. 1567 - ca. 1625)

③ = Fa#
⑥ = Re

8

5

10

14

18

Detailed description: This is a lute tablature score for the piece 'Branle gay' from the 1603 edition of 'Thesaurus Harmonicus' by Jean-Baptiste Besard. The score is written for a six-string lute in the key of D major (two sharps) and 3/4 time. It consists of five systems of music, each with a treble clef staff and a bass staff. The treble staff contains the melody with rhythmic values and fingerings (0-3). The bass staff contains the bass line with fingerings (0-2). The piece is 18 measures long. The first system (measures 1-4) includes a legend: ③ = Fa# and ⑥ = Re. The second system (measures 5-8) starts with a measure number '5'. The third system (measures 9-12) starts with a measure number '10'. The fourth system (measures 13-16) starts with a measure number '14'. The fifth system (measures 17-18) starts with a measure number '18'. The piece concludes with a double bar line at the end of the fifth system.